



## REGIONAL SPECIALISED METEOROLOGICAL CENTRE-TROPICAL CYCLONES, NEW DELHI TROPICAL WEATHER OUTLOOK

**DEMS-RSMC TROPICAL CYCLONES NEW DELHI DATED 16.05.2024**

**TROPICAL WEATHER OUTLOOK FOR NORTH INDIAN OCEAN (THE BAY OF BENGAL AND THE ARABIAN SEA) VALID FOR NEXT 168 HOURS ISSUED AT 0600 UTC OF 16.05.2024 BASED ON 0300 UTC OF 16.05.2024.**

### **BAY OF BENGAL:**

YESTERDAYS CYCLONIC CIRCULATION OVER SOUTHWEST BAY OF BENGAL OF BENGAL & ADJOINING SOUTH SRI LANKA LAY OVER COMORIN AREA & ADJOINING SOUTH TAMIL NADU COAST BETWEEN 1.5 KM & 4.5 KM ABOVE MEAN SEA LEVEL AT 0300 UTC OF TODAY, 16<sup>TH</sup> MAY, 2024.

SCATTERED TO BROKEN LOW AND MEDIUM CLOUDS WITH EMBEDDED INTENSE TO VERY INTENSE CONVECTION LAY OVER SOUTHWEST BAY OF BENGAL SOUTH ANDAMAN SEA (MINIMUM CLOUD TOP TEMPERATURE -93<sup>0</sup>C) AND WESTCENTRAL BAY OF BENGAL (MINIMUM CLOUD TOP TEMPERATURE -80<sup>0</sup>C). SCATTERED LOW AND MEDIUM CLOUDS WITH EMBEDDED MODERATE TO INTENSE CONVECTION LAY OVER SOUTHEAST BAY OF BENGAL NORTH ANDAMAN SEA AND ISOLATED WEAK TO MODERATE CONVECTION LAY OVER NORTH BAY OF BENGAL.

### **\*PROBABILITY OF CYCLOGENESIS (FORMATION OF DEPRESSION) DURING NEXT 168 HRS:**

24 HOURS	24-48 HOURS	48-72 HOURS	72-96 HOURS	96-120 HOURS	120-144 HOURS	144-168 HOURS
NIL	NIL	NIL	NIL	NIL	NIL	NIL

**\*NOTE: EVERY 24HR FORECAST IS VALID UPTO 0300 UTC (0830 IST) OF NEXT DAY**

### **ARABIAN SEA:**

A FRESH CYCLONIC CIRCULATION LAY OVER WESTCENTRAL ARABIAN SEA OFF YEMEN COAST UPTO 4.5 KM ABOVE MEAN SEA LEVEL AT 0300 UTC OF TODAY, 16<sup>TH</sup> APRIL,2024.

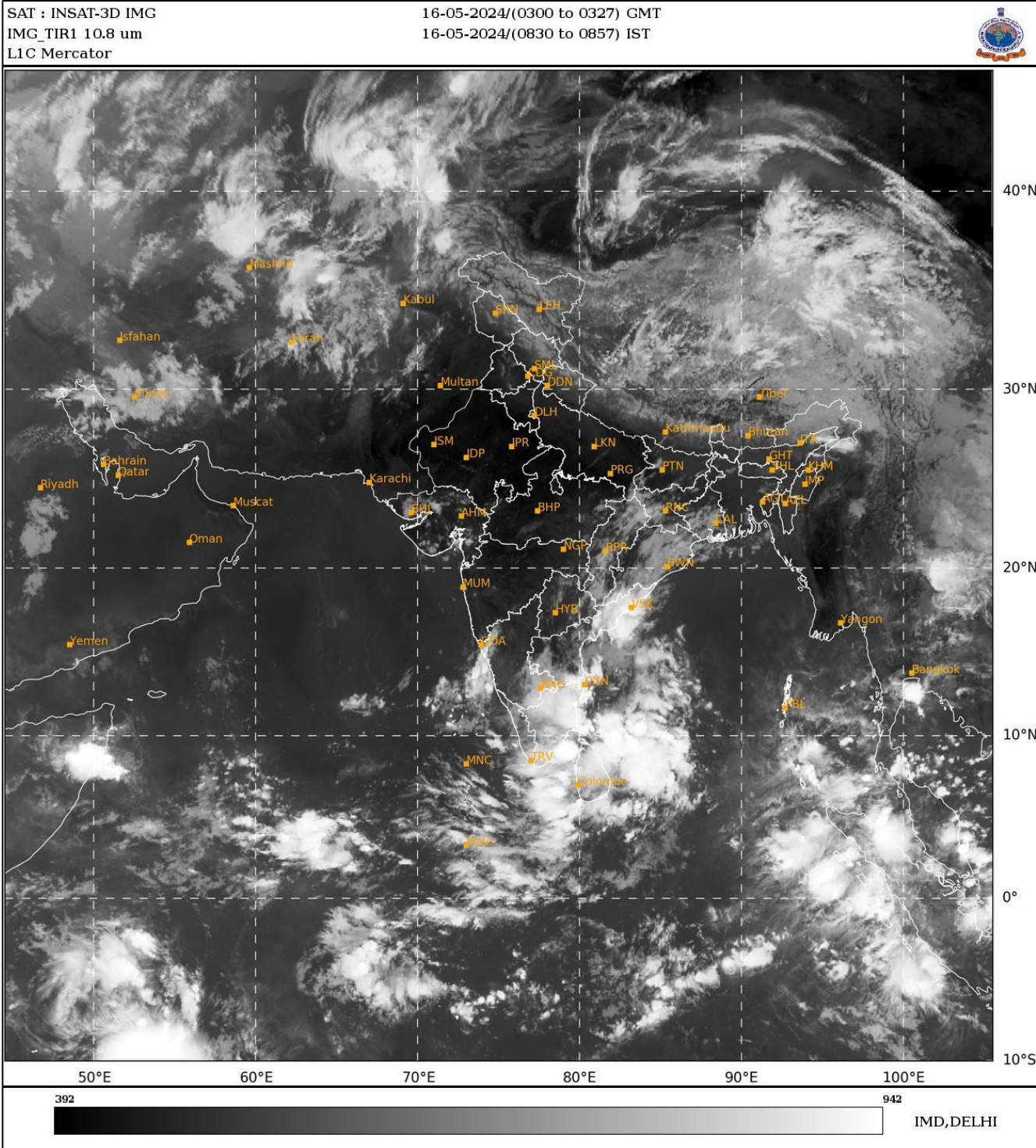
SCATTERED LOW AND MEDIUM CLOUDS WITH EMBEDDED INTENSE TO VERY INTENSE CONVECTION LAY OVER EASTCENTRAL ARABIAN SEA OFF KARNATAKA COAST (MINIMUM CLOUD TOP TEMPERATURE -85<sup>0</sup>C) SOUTHWEST ARABIAN SEA & COMORIN AREA (MINIMUM CLOUD TOP TEMPERATURE -93<sup>0</sup>C). SCATTERED LOW AND MEDIUM CLOUDS WITH EMBEDDED MODERATE TO INTENSE CONVECTION LAY OVER SOUTHEAST ARABIAN SEA LAKSHADWEEP ISLANDS AREA MALDIVES AREA AND WEAK TO MODERATE CONVECTION LAY OVER GULF OF CAMBAY.

**\*PROBABILITY OF CYCLOGENESIS (FORMATION OF DEPRESSION) DURING NEXT 168 HRS:**

24 HOURS	24-48 HOURS	48-72 HOURS	72-96 HOURS	96-120 HOURS	120-144 HOURS	144-168 HOURS
NIL	NIL	NIL	NIL	NIL	NIL	NIL

**\*NOTE: EVERY 24HR FORECAST IS VALID UPTO 0300 UTC (0830 IST) OF NEXT DAY**

**REMARKS: NIL.**



Cloud distribution: (a) Isolated: <25%, Scattered:25-50%, Broken: 51-75%, Solid:>75%, Convection Intensity: (a) Weak: Cloud Top Temperature (CTT) >-25°C, (b) Moderate: CTT: - 25°C to -40°C, (c) Intense: CTT: - 41°C to -70°C and (d) Very Intense: : Less than -70°C  
**PROBABILITY OF CYCLOGENESIS (FORMATION OF DEPRESSION):NIL: 0%, LOW: 1-33%, , MODERATE: 34-66% AND HIGH: 67-100%**  
 This is a guidance Bulletin for WMO/ESCAP Panel Member countries. Visit respective National websites for Country specific Bulletins